



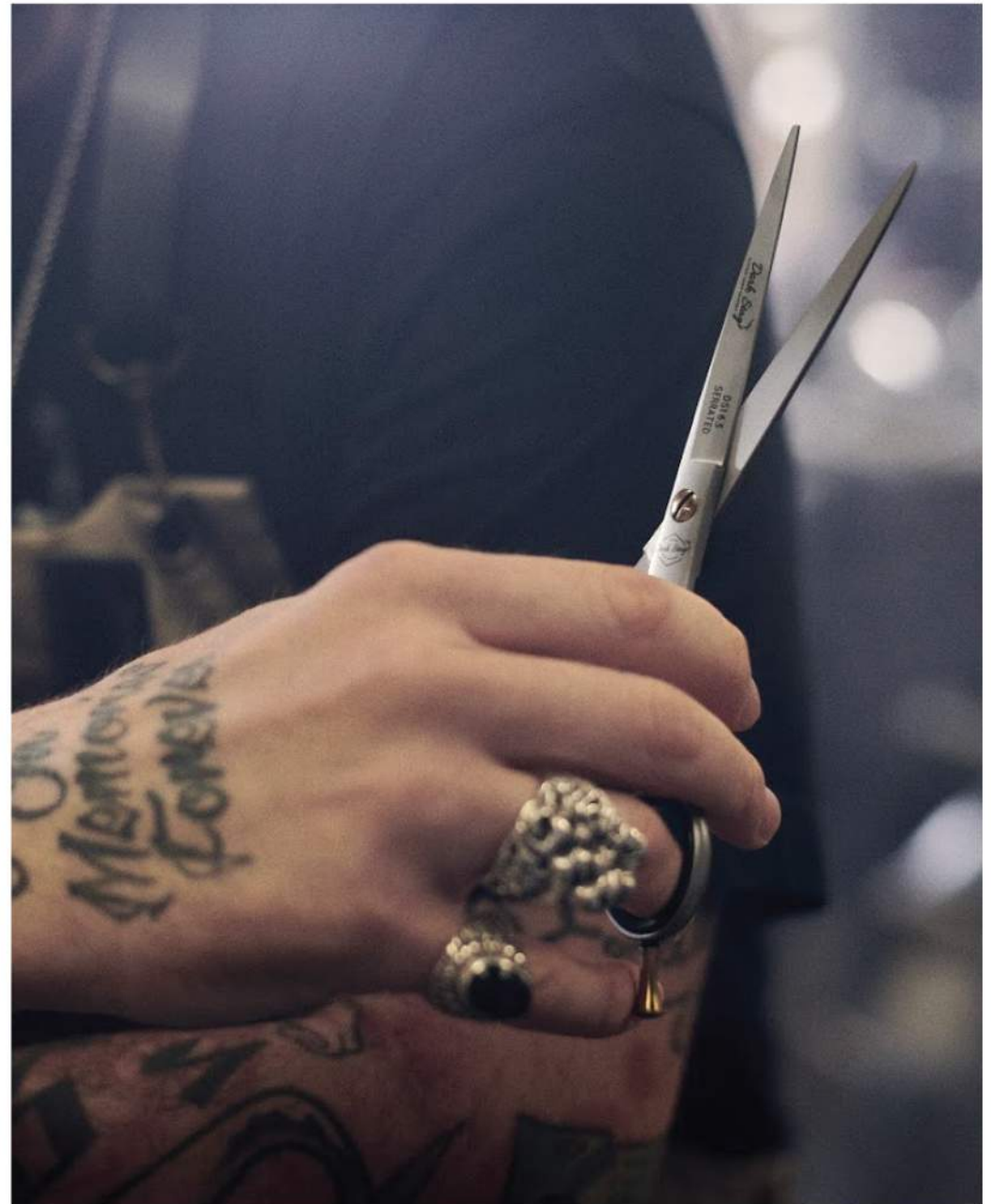
## PRODUCT GUIDE





# Contents

- 2 *Introduction*
- 4 *Straight Barber Scissors*
- 5 *Offset Barber Scissors & Thinner*
- 6 *Work Brushes*
- 8 *Cut Throat Razors*
- 9 *Leather Strop & Kamisori Razor*
- 11 *Straight Razors/Shavettes*
- 12 *Apron*
- 13 *Leather Tool Roll & Station Mat*
- 14 *Shaving Brushes & Bowl*
- 16 *Safety Razors*
- 17 *Beard Scissor & Manicure Set*
- 19 *Nail Clipper & Tweezer*
- 21 *Shaving Set*
- 22 *Combs*
- 24 *Barber Shop Retail*



# INTRODUCTION

*The greatest barbers combine vision with integrity to rise to the top. Innovators continually work to reinvent the craft and their influences shape the future. Today's work is shared worldwide without barriers, steering the development of modern identity.*

*Locally barbers provide havens for comradery across a spectrum so vast that the impact can not be measured. We leave the barbershop revived with confidence and sometimes with more.*

*For barbers to continue this positive influence on society they need tools they can rely on. Dark Stag have harnessed the integrity of this ancient profession. We will always respect the history and do the right thing in helping today's barber shape the industry for the future.*



**Andrew Wiseman**  
Founder



# STRAIGHT BARBER SCISSORS



**Classic design barber scissor providing durable performance.**

The Dark Stag DS1 are pure barber scissors. One micro serrated blade ensures a perfect trustworthy cut right to the tip. Heat treated stainless steel provides long lasting performance in this medium weight barber scissor. An innovative German design screw system provides a smooth feel.

Finger rest is removable.

**Sizes available**

4838: 6.0"  
4845: 6.5"  
5071: 7.0"



Micro serrations



**Superior performance. Supremely sharp and versatile barber scissor.**

The Dark Stag DS+ is the ultimate barber scissor. A razor sharp acute convex edge ensures the ultimate cut suitable for all types of work including more advanced techniques. The high performance stainless steel and smooth screw system provide both stable tension and a silent, effortless feel free from resistance.

Finger rest is removable.



**Sizes available**

4852: 6.0"  
4869: 6.5"  
5088: 7.0"

# OFFSET BARBER SCISSORS & THINNER



**Superior performance combined with ultimate comfort.**

The new Dark Stag DS+ Offset offers incredible long lasting precision and an effortless reliable feel when cutting. It's offset design allows the hand and arm to work in a more natural and comfortable cutting position, reducing strain and fatigue. Combined with the silent and smooth tension system, the DS+ Offset is a pleasure to work with for everyday use.

Finger rest is removable.



**Sizes available**

5453: 6.0"  
5460: 7.0"  
5477: 6.0" Lefty



**Smooth, pull-free texturing with effortless comfort.**

Our new DS+ Offset thinner utilises an innovative tip design on the 30 teeth to guarantee an extremely smooth feel with zero pulling or dragging on the hair. The scissor's ergonomic design combined with the smooth tension system provides effortless comfort and reduces strain on the hand. The perfect scissor for any blending and thinner techniques.

Finger rest is removable.



**Size available**

5484 6.0"

# WORK BRUSHES

## Barber Neck Brush



Dark Stag's Barber Neck Brush is produced in elegant dark wood and uses soft bristles to effortlessly remove cut hair. The bristles utilise a purpose designed memory composite to maintain their shape over long term use and even when stored badly. The round handle base allows the brush to stand upright at your station.

115 mm x 140 mm x 35 mm



5491

## Barber Fade Brush



Dark Stag's Barber Fade Brush uses perfectly judged soft bristles for removing cut hair during fade work. Designed for clipper fade cuts, we've made sure this brush is ideal for removing hair from clippers too. Comfortable for use on even the most sensitive of scalps.

215mm x 30mm x 30mm



5507

## Beard Brush



Dark Stag's Barber Beard brush is made with 100% ethically sourced wild boar bristle. The firm texture is perfect for taming, shaping and styling unruly beards and facial hair. This palm sized brush is ideal for grooming at home or on the move.

85mm x 30mm x 30mm



5514





# CUT THROAT RAZORS



Produced in stainless steel our cut throat razor is the perfect tool for an old school close shave. With a rounded blade edge and wooden handle, the superbly hand crafted blade is hollow ground, polished and ready to shave. A few passes on the strop are all you need between shaves to ensure a perfect smooth glide across the skin. Storage pouch included.

4890



Dark Stag have teamed up with Böker to produce this sublime 5/8" traditional straight razor. Böker have produced straight razors in Solingen, Germany since 1869 with their tree family trademark registered in 1674. We have used carbon steel to achieve high retention of cutting edge sharpness. This product is produced 100% by hand in Germany.



5521

# LEATHER STROP



**Leather Strop**

Made from durable buffalo leather, our stop is the ideal tool for polishing and smoothing your cut throat razor blade for the ultimate close and comfortable shave. Use the coarse side for coarse edge alignment and the fine side for fine blade edge alignment. A padded handle provides comfort and a strong, reliable attachment ring will hook to a wall or many barber chairs.

5026



**Kamisori  
Straight Razor**

Unique to Dark Stag, this straight handled razor uses regular double edge razor blades meaning you can choose your favourite brand. With one edge used per client this provides the most cost effective route to a perfect shave. The spring mounted one touch blade holding mechanism can be opened easily for cleaning and disinfecting. Changing the blade takes 2 seconds: pinch the head to drop out the used blade and pop in the replacement.

5538



# STRAIGHT RAZORS / SHAVETTES

A shavette or replaceable straight blade razor is a relative of the traditional cut throat razor, but with the benefit of easily changeable blades. This straight razor uses half a traditional double edge blade so one blade can be used for 2 clients. Suitable for professional shaving, tidying and shaping beards, facial hair and the nape of the neck. Available with lightweight wooden or heavier stainless steel handle. Storage pouches are provided.



4913



Straight Razor

Wooden Handle



Includes  
Storage Pouch



5002



Premium  
Straight Razor

Steel Handle



Includes  
Storage Pouch



# BARBER APRON

Our barber apron is hand stitched in comfortable, breathable and durable tan canvas. Black and brown pockets and loops are secured with strong rivets to provide long lasting storage for all essential tools. Adjustable waist and neck straps are secured with brass hook holes and lobster clasps, providing flexibility to fit barbers of all shapes and sizes. The Dark Stag barber apron will age well, gaining character through use.



5408

# LEATHER TOOL ROLL & STATION MAT

Leather Tool Roll



Our signature tool roll is hand stitched in split leather and is hardy enough to outlast many of its owners. Our tanning process maintains a natural brown finish which is punctuated with ivory stitch and silver rivets. It provides practical storage for protecting and transporting tools in distinguished style.



5392

Barber Station Mat



Preserve your worktops or work station with our Rubber-PVC Polymer Barber Station Mat. This durable accessory provides grip to prevent essential tools slipping and dropping. Our unique Rubber-PVC mix has been specially formulated to provide the ultimate heat resistance for placing warm clippers without damage. Our mat is easy to clean and enhances any organised work station.

380m x 280mm



5415

# SHAVING BRUSHES & BOWL

## Shaving Brush



The Dark Stag shaving brush uses the most modern synthetic badger bristle to ensure a traditional look with modern benefits. The synthetic bristle is non absorbent so dries quickly. The bristles are secure, do not shed and are designed to stimulate and lift the beard to perfectly prepare for a close shave.



4944

## Badger Bristle Shaving Brush



This new addition to our brush collection combines the perfect mix of badger bristle to form a rich lather quickly and easily. Badger bristle provides excellent exfoliation and gently massages the skin whilst lifting facial hair. Perfect for a smooth, nick-free shave.



5446

## Shaving Bowl



The Dark Stag stainless steel shaving bowl is the perfect tool for whipping up a rich lather for wet shaving. The flat base provides stability.

4876





# SAFETY RAZORS

Using widely available double edge blades our safety razors are an elegant yet economical alternative to today's disposable plastic.



SR1 Safety Razor

The SR1 is hand produced in stainless nickel alloy and wood. This durable razor is perfectly balanced and the supreme feel is enhanced by its wooden handle.

4951



SR+ Safety Razor

The SR+ is produced in a heavy duty, hard wearing steel with a nickel alloy head. The additional weight provides stability - enhanced by it's knurled grip. The black plasma coating is durable and its look improves with age and use.



4968

# PERSONAL GROOMING



## Beard and Moustache Scissor



Designed for beard and moustache trimming and shaping with more accuracy for intricate work than clippers. Durable stainless steel construction. Storage pouch provided.



4883



## Mens Manicure Set



Everything a man needs to maintain his nails - a nail scissor, a real man's fold away slimline nail clipper, a cuticle pusher and claw tweezers - all in durable stainless steel. Storage wallet included.



4937



# NAIL CLIPPER & TWEEZER



**Mans Nail Clipper**

The Dark Stag Man's Nail Clipper uses an ultra slim design to minimise precious pocket or man drawer space. The innovative folding lock design means no sharp edges are exposed while not in use, protecting your pocket and keeping the blades sharp. The durable spring system will make cutting smooth and the mechanism will not become loose over time. Finished in stealth black, this grooming gadget provides powerful clipping capabilities.

60mm x 5mm x 13mm



**Mans Tweezer**

The Dark Stag Man's Tweezer is sturdy, solid and ultra precise. Created in stainless steel, the hand-honed tips provide ultimate grip on even the smallest hairs. Finished in stealth matte black, these tweezers are easy to grip compared to a glossy finish and are visually striking.

105mm x 10mm x 8mm

5422

5439



# SHAVING SET

The ultimate combination of our SR1 double edged safety razor, shaving brush, stainless steel shaving bowl and stainless steel stand for impressive and useful storage.



5019

# BARBER & BEARD COMBS

Dark Stag's barber combs contain carbon fibre to ensure extreme strength and durability.  
All are anti-static and heat resistant up to 230°C.



4975



Comb 1 - Taper

Popular style for barbering with great flexibility and ideal for scissor over comb work.

Length 18.5cm  
Maximum depth 2.5cm  
Weight 10g



4982



Comb 2 - Cutting

Excellent all-round cutting comb suitable for scissor over comb work.

Length 18.3 cm  
Maximum Depth 2.5cm  
Weight 12g



# BARBER & BEARD COMBS



4999



**Comb 3 - Military**

Longer comb designed for styling and grooming.

Length 21cm  
Maximum depth 2.9cm  
Weight 16g



4920



**Beard & Moustache Comb**

For full control of facial hair this anti static comb is produced in 100% natural and sublimely aromatic walnut wood. This rugged and durable pocket tool is hypoallergenic, easy on the scalp and has fine and wide tooth options.

Length 10cm

# BARBER SHOP RETAIL DISPLAY

Barbers can now enable clients to take their experience home. Many of our tools provide the ultimate upgrade to the home grooming regime. We supply a superbly finished sapele wood display with engraved branding to offer a selection of your choice.



5095





[www.darkstag.com](http://www.darkstag.com)  
Tel: +44 (0)1903 209 409  
[info@darkstag.com](mailto:info@darkstag.com)