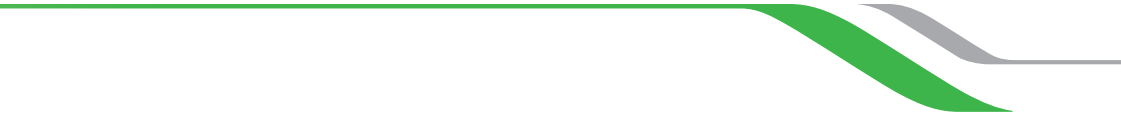


nubea
essential oil therapy







Essential oils and natural perfumes:
a precious gift for
beauty, health and well-being



If the plant kingdom did not exist there would simply be no life on earth.

Plants give us everything we need: nourishment, food, furniture, medicines, they regenerate our oxygen and even provide us with unique aromas.

Unlike animals, plants do not move. Thanks to the roots where they grow they must necessarily adapt to the environment that surrounds them. This is why they have developed an extraordinary capacity to adapt and evolve.

And this is how, in the course of their long history, plants have developed their extraordinary diversity: from huge trees to rare flowers, from legumes to medicinal plants.

Amongst all of these, we are interested in the plants that have developed aromas and perfumes. We should consider the arrival of aromas in the plant world as a kind of revolution that left a benchmark on the history of plants.

Life began in the sea, then plants began to colonise the land above sea level.

A series of stages mark their evolution:

- the arrival of discernable plant sexes
- the capacity to photosynthesise (or rather the capacity to use the sun's energy to create new molecules)
- collaboration with the animal kingdom, the invention of complex chemicals producing colours and smells to guide insects to their flowers.

And this is the way that a vital and important exchange occurs between plants and insects. The former offer their nectar and pollen and the latter contribute to the pollination and therefore to the survival of the plant and its development. The perfumes - rich, precious and complex substances - constitute the stage that completes the biological evolution of aromatic plants.

Born out of cooperation with the animal world, they symbolise the laws of harmony that link plants, animals and man.

Perfumes, essential oils, contain the medicinal and curative properties of aromatic plants. To preserve a high quality of essential oil they must be extracted by vapour distillation. It is preferable to carry out research on plants from organic cultivation that can create Organic essential oils. Even in very small quantities, these precious aromas offer us a wide variety of properties, thanks to aromatherapy products that look after our body, face and hair. Numerous researches have shown the revitalising and harmonising actions created by essential oils and in particular through similar aromatic chains contained in plants and in the secretions of our body.

The olfactory story with plants goes like this: perfumes and aromas that we like are good for our health. As we know, the skin is the largest organ in the body and it is the interface between what is inside and what is outside. It reflects the working of the organism, it filters and protects us from negative influences or from various pollutants that arrive from outside. Our epidermis, just like our hair, mirrors our state of health. It is also important to follow a balanced lifestyle: eating healthily, drinking a lot of water, taking exercise, cultivating positive thinking, trusting in the life that flows through us and that unites us with other people but also with what we experience.

Our health and the beauty of our skin need to be cared for: cleansing, moisturizing, toning, regulating the activity of the sebaceous glands and preventing the signs of aging. To help us do all of this, high quality essential oils offer us strong therapeutic properties and benefits. Their antiseptic and disinfectant properties are particularly effective in providing intense revitalisation and protection for the organism.

The skin is considered by many therapists to be the best channel for using essential oils as it allows us to take advantage of their multiple beneficial effects in a simple way.

Evocative names:

Rosemary (*Rosmarinus Officinalis*): general stimulant, revitalising and cell regenerator. Ideal for dry hair and helps to stop hair loss.

Lavender (*Lavandula Angustifolia*): calming and soothing. Soothes irritation and helps regulate sebaceous secretions. Suitable for normal and greasy hair.

Tea Tree (*Melaleuca Alternifolia*): general disinfectant, anti-inflammatory, anti-bacterial. Active against parasites.

Sage (*Salvia Officinalis*): general stimulant, indicated for skin pathologies. Helps reduce hair loss. Antibacterial, antiseptic and healing.

Mint (*Mentha Arvensis*): it is a powerful essential oil and should be used in small doses. It has antibacterial, antiparasitic and analgesic properties. It has characteristics that can help cure headaches (linked to its analgesic and vaso constrictive actions).

Eucalyptus (*Eucalyptus Globulus*): stimulating, astringent, analgesic and healing. Indicated for treating inflammations of the skin caused by bacteria and fungi.

These are just a few examples to begin our journey into the perfumes and aromas that can heal us.

Prof. Rodolphe Balz



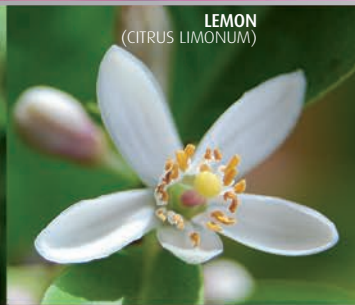
GERANIUM
(GERANIUM MACULATUM)



ROSEMARY
(ROSMARINUS OFFICINALIS)



BERGAMOT
(CITRUS AURANTIUM BERGAMIA)



LEMON
(CITRUS LIMONUM)



CLOVE
(EUGENIA CARYOPHYLLUS)



CHAMOMILE
(CHAMOMILLA RECUTITA)



CYPRESS
(CUPRESSUS SEMPERVIRENS)



TEA TREE
(MELALEUCA ALTERNIFOLIA)



VERBENA
(VERBENA OFFICINALIS)

The secret of **Nubeà** formulas
is the synergy of Essential Oils

Nubeà developed a programme of treatments that restore the natural balance of the skin and combat its most common disorders.
The synergies of selected Essential Oils represent an important synthesis of years of study and tests carried out to verify the effectiveness of every single substance used in Nubeà formulas.



SCOTS PINE
(PINUS SYLVESTRIS)



MINT
(MENTHA ARVENSIS)



LAVENDER
(LAVANDULA ANGUSTIFOLIA)



FENNEL
(FOENICULUM VULGARE)



TILIA
(TILIA VULGARIS)



BITTER ORANGE
(CITRUS AURANTIUM AMARA)



EUCALYPTUS
(EUCALYPTUS GLOBULUS)



SAGE
(SALVIA OFFICINALIS)

The Essential Oils are enriched with Plant Extracts, Trace Elements, Vitamins and active ingredients that are proven to be effective, amongst them are:

- Arnica Extract
- Serenoa Repens Extract
- Malva Extract
- Algae Extract
- Calendula Extract
- Ginseng Extract
- Camellia Extract
- Argan Extract

- Bamboo Extract
- Horse-chestnut Extract
- Azulene
- Bisabolol
- Hops
- Climbazole
- Piroctone Olamine
- Vitamin A - E

Delicate, skin compatible formulas
Sles free - Alcohol free
dermatologically tested



Nubeà's research proposes formulas that do not destabilise the delicate balance of the scalp and hair:
we only use **plant origin tensioactives**.

The maximum delicacy and skin compatible formulas (**SLES free**) allow for deep cleansing of the scalp and hair while keeping the integrity of the hair's structure.

Alcohol free formula. Ideal also for frequent use.

All the products have passed the **patch test** and carry the **dermatologically tested** label.



Before the treatment investigation and diagnosis

Nubeà developed **Indago**,
an instrument for the direct observation
of anomalies and imperfections of the scalp
that are not noticeable with the naked eye.

Analysing the scalp using the **Indago** method allows for an
accurate diagnosis to then advise on the most suitable Nubeà
treatment.



Diagnosis with **Indago** provides:

- a) an overview of the state of health of the scalp and hair
- b) assessing for a seborrhoeic scalp and the subsequent mathematic evaluation of it
- c) the chance to identify the difference between the predictable types of seborrhoea and those of dandruff (dry/greasy), the presence of hyperkeratotic pathologies (seborrhoeic dermatitis/psoriasis), the amount of dry skin (hypohidrosis/asteatosis) or simple observation of sensitive and thin skin on the scalp
- d) a close examination of the cuticle and hair bulb to evaluate the hair cycle condition



essentia	pag. 18
sursum	pag. 28
solutia	pag. 38
équisebo	pag. 48
auxilia	pag. 56
synérgeo	pag. 64
sustenia	pag. 72
solenium	pag. 84

essentia

detoxifying treatment





essentia

detoxifying treatment

The life cycle of the hair is greatly affected by our way of life. Stress and a poor diet are at the root of a deterioration in the functioning of the hair bulb, as well as climate change and pollution which can damage the health of the hair itself.

The basic condition necessary for hair to be able to grow healthy and strong is that the hair bulb be perfectly able to receive nutrients from the microcirculation of the skin. So it is fundamental that the subcutaneous structure is maintained in peak form to carry out this synthesis in the most efficient way through actions of constant and regular detoxification.

Detoxification, obtained through the application of a precious mix of Essential Oils, allows the scalp to regain its perfect balance thanks to the important nutrients it receives that are necessary to the synthesis of keratin to occur.

The regular use of Essentia keeps the scalp in optimum condition and able to grow hair that is strong and healthy. The precious Essential Oils of *Pinus Sylvestris* (invigorating and anti-inflammatory), *Salvia Officinalis* (stimulating) and *Rosmarinus Officinalis* (dermo-purifying and stimulating) mixed with trace elements deeply purify the scalp, improving the vitality of the hair in a sensitive way.



essentia
detoxifying extract

Additional treatment. Adding this precious mix of concentrated Essential Oils to the Essentia Detoxifying Treatment in the vial enhances the power of the treatment.

n.d.
DERMATOLOGICALLY TESTED
30 ml / 1.01 fl oz

cod. 8058456941011



essentia
detoxifying shampoo

Detoxifying shampoo with Pine, Rosemary, Sage, Eucalyptus, Lavender, Melaleuca Essential Oils and plant extracts. Deeply cleanses and stimulates micro-circulation helping the growth of strong and healthy hair.

pH 6.3 - 7.3
SLES FREE
DERMATOLOGICALLY TESTED
200 ml / 6.76 fl oz - 1000 ml / 33.81 fl oz
PATENTED BOTTLE
200 ml cod. 8058456941035 - 1000 ml 8058456941059



essentia
detoxifying treatment vial

Detoxifying treatment vial formulated with Essential Oils, specific for pre and post shampoo. Deeply purifies and helps the scalp regain the right balance. Improves scalp elasticity and fights the weakening of the hair's root. Stimulates micro-circulation helping regrowth.

[1] pH 3.1 - 4.1 / [2] pH 4.3 - 5.3
DERMATOLOGICALLY TESTED
5 vials **1** 6,5 ml / 0.22 fl oz
5 vials **2** 6,5 ml / 0.22 fl oz

cod. 8058456941004

PROTOCOL OF USE *

	<p>ESSENTIA VIAL 1</p> <p>Shake well before use. Apply evenly to dry scalp massaging with small circular movements and a little pressure. Leave for 10 minutes carrying out the nubeà massage or self massage.</p>
<p>ESSENTIA DETOXIFYING EXTRACT</p> <p>Shake well before use. Apply 11 drops onto scalp and massage until fully absorbed.</p>	<p>ESSENTIA SHAMPOO OR SYNÉRGO SHAMPOO</p> <p>After rinsing the vial 1, apply in several places to wet hair, massage and emulsify with water. Rinse. Repeat if necessary.</p>
	<p>ESSENTIA VIAL 2</p> <p>Shake well before use. Use on well towel-dried scalp after the specific shampoo. Apply evenly to the scalp applying a little pressure. Do not rinse.</p>
<p>CYCLE</p> <p>Treatment should be integrated according to the professional diagnosis.</p>	<p>CYCLE</p> <p>Treatment should be carried out twice during the first week and once a week for the following 3 weeks.</p>



essentia
scalp gommage

Detoxifying scalp gommage with Essential Oils of Eucalyptus, Juniper, Rosemary, Scots Pine, natural microgranules, and vegetable carbon with a purifying effect. Eliminates impurities and re-establishes scalp balance and hydration leaving hair light and clean for a long time.

pH 3.0 - 4.0
SLES FREE / SLS FREE
 DERMATOLOGICALLY TESTED
 250 ml / 8.45 fl oz

250 ml cod. 8058456941066

PROTOCOL OF USE *



**ESSENTIA
GOMMAGE
CUTE**

Apply onto dry scalp with a brush. Massage, leave on for 10 minutes, rinse carefully and proceed with the specific shampoo.



**ESSENTIA
SHAMPOO
OR SYNÉRGO
SHAMPOO**

Apply in several places to wet hair, massage and emulsify with water. Rinse. Repeat if necessary.

CICLO

Treatment to be integrated based on professional and personalized diagnosis. The treatment must be carried out from a minimum of 2 to a maximum of 3 times in the 4 weeks of Essentia treatment.

essentia

detoxifying treatment

To strengthen the hair or at the first signs of widespread hair loss, carry out a complete cycle of Essentia treatments.

If you need a specific treatment you could follow one of these cycles: Sursum, Solutia, Équisebo.



The complete cycles should be repeated as needed.

*The standard Essentia protocols can change according to professional diagnoses and any possible anomalies.

sursum

anti-hairloss adjuvant treatment





SURSUM

anti-hairloss adjuvant treatment

Hair loss is an entirely natural phenomenon that accompanies the life of our hair. If it is persistent or periodic, the phenomenon can be helped with effective and safe treatments.

The life cycle of each hair (Anagen) normally lasts 5-7 years. This is followed by a transition period (Catagen) which lasts 2-3 weeks and a period of quiescence (Telogen) which is preparatory to the next phase of growth and lasts about 2-3 months.

Sometimes, situations of excessive stress on the hair bulb bring about a lengthening in the period of inactivity and a decrease in the period of hair synthesis. There are also other factors that can produce progressive hair loss: the most well known is androgenic alopecia, caused by a genetic predisposition associated with a high concentration of hormone in the hair bulb.

The Sursum line contains the rare extract of *Serenoa Repens* which is recognized as one of the main agents that prevent progressive loss. This action is enhanced by the synergy with Essential Oils based on *Citrus Limonum* (calming, antiseptic and invigorating) and *Citrus Aurantium Bergamia* (venous tonic and depurative) and on Vitamin A and E which help the vitality of the hair and visibly maintain growth as a prerogative.



sursum

anti-hairloss adjuvant shampoo

Nourishing shampoo with Lemon and Bergamot Essential Oils and Serenoa extract. Strengthens hair and prolongs its life cycle. For use during the Essentia and/or Sursum treatment period.

pH 6.1 - 7.1

SLES FREE

DERMATOLOGICALLY TESTED

200 ml / 6.76 fl oz - 1000 ml / 33.81 fl oz

PATENTED BOTTLE

200 ml cod. 8058456942001 - 1000 ml cod. 8058456942056



sursum

anti-hairloss adjuvant treatment vial

Anti-hairloss adjuvant shock treatment vial, specific for pre and post-shampoo. Formulated with Essential Oils, Vitamins and precious plant extracts. Prevents hairloss, guarantees nourishment and strength to the hair prolonging its life cycle.

[1] pH 3.7 - 4.7 / [2] pH 3.9 - 4.9

DERMATOLOGICALLY TESTED

6 vials **1** 6,5 ml / 0.22 fl oz

6 vials **2** 6,5 ml / 0.22 fl oz

cod. 8058456942100



sursum

progressive hairloss daily lotion

Synergy of Essential Oils and Serenoa extract with nourishing and anti-hairloss adjuvant action. Improves hair's condition and prolongs its life cycle. Indicated for cases of androgenetic alopecia.

pH 4.8 - 5.8

DERMATOLOGICALLY TESTED

50 ml / 1.69 fl oz

PATENTED BOTTLE

cod. 8058456942155

sursum

reactive hairloss daily lotion

Synergy of Essential Oils with nourishing, purifying and anti-hairloss adjuvant action. Helps growth of healthy and strong hair while prolonging its life cycle. Indicated for cases of telogen effluvium.

pH 4.0 - 5.0

DERMATOLOGICALLY TESTED

50 ml / 1.69 fl oz

PATENTED BOTTLE

cod. 8058456942209

sursum

anti-hairloss adjuvant patch

Single use patch with localizing and topical action. Formulated with Essential Oils, Hops extract and Bisabolol, known for their nourishing effect on the scalp and hair lengths, helps restore strength and energy to the hair and prolongs its life cycle. Its innovative application technology helps release the functional substances over 10-12 hours. To be used daily in synergy with the other products of the Sursum line.

n.a.

DERMATOLOGICALLY TESTED

30 patches

cod. 8058456942254

PROTOCOL OF USE *

 <p>SURSUM VIAL 1 Shake well before use. Apply evenly to dry scalp massaging with small circular movements and a little pressure. Leave for 10 minutes carrying out the nubeà massage or self massage.</p>		
 <p>SURSUM SHAMPOO After rinsing the vial 1, apply in several places to wet hair, massage and emulsify with water. Rinse. Repeat if necessary.</p>	<p>SURSUM PROGRESSIVE HAIRLOSS OR REACTIVE HAIRLOSS DAILY LOTION Choose the lotion for progressive hairloss or the reactive lotion depending on the type of anomaly. Shake well before use. Dry hair, apply 5 drops onto scalp, and massage until fully absorbed. Do not rinse.</p>	<p>SURSUM PATCH Use a disposable patch per day applying it at the base of the neck, to intact, dry and clean skin. Leave for 10-12 hours then gently remove.</p>
 <p>SURSUM VIAL 2 Shake well before use. Use on well towel-dried scalp after the specific shampoo. Apply evenly to the scalp applying a little pressure. Do not rinse.</p>		
<p>CYCLE Treatment to be used once a week for 6 weeks.</p>	<p>CYCLE Treatment to be applied every day in the morning for 10-12 weeks from the beginning of the treatment with the Sursum vials.</p>	<p>CYCLE Treatment to be applied every day before going to bed for 30 days from the beginning of the treatment with the Sursum vials. Repeat if necessary.</p>

SURSUM

anti-hairloss adjuvant treatment

In the case of widespread hair loss, after a cycle of detoxifying Essentia treatment (see Essentia), proceed to a cycle of Sursum treatments.



The complete cycle should be repeated as needed.

*The standard Sursum protocol can change according to professional diagnoses and any possible anomalies.

solutia

anti-dandruff adjuvant treatment



ANTI-DANDRUFF
ADJUVANT



solutia

anti-dandruff adjuvant treatment

The problem of dandruff causes discomfort and embarrassment and can give rise to bigger symptom problems such as psoriasis and dermatitis. The presence of dandruff on the scalp can have different causes. The principal causes are stress on the body and mind and the proliferation of a micro-organism, the *Malassezia Furfur* which causes the peeling of the scalp. The dandruff can manifest as dry skin or oily skin. In the latter case, the presence of high amounts of lipid material creates an environment that is conducive to the proliferation of *Malassezia furfur*, thus accentuating the problem. Instead, dry dandruff occurs as flaking to a greater or lesser degree often accompanied by itching, but in the presence of a hypo-secretion of sebum. In this case it is important to resolve the problem by deeply moisturizing the scalp without irritating it any further.

The Solutia line of formulas effectively fight the formation of dandruff acting deeply on the condition of the scalp and hair. The precious synergies of Essential Oils based on *Melaleuca Alternifolia* (Tea Tree) (antifungal, preservative and slightly anesthetic), *Salvia Officinalis* (stimulating) and *Rosmarinus Officinalis* (dermopurifying and stimulating), associated to selected anti-dandruff agents and rare Vegetal Extracts, offer the possibility to effectively aim towards visibly resolving the "dandruff" problem however it began.



solutia

purifying extract

Concentrated synergy of Essential Oils with exfoliating action. Gently removes flaking cells. Prevents dandruff formation, keeps the scalp moisturized and reduces redness.

n.d.

DERMATOLOGICALLY TESTED

30 ml / 1.01 fl oz

cod. 8058456943251



solutia

purifying emulsion

Anti-dandruff adjuvant emulsion with Essential Oils and Climbazole. Helps removal of the flaking cells. Prevents dandruff development, keeps the scalp moisturized while reducing redness.

pH 5.5 - 6.5

DERMATOLOGICALLY TESTED

75 ml / 2.54 fl oz

cod. 8058456943305



solutia

anti-dandruff adjuvant treatment vial

Anti-dandruff adjuvant shock treatment vial, specific for pre and post-shampoo. Formulated with Essential Oils and Climbazole. Purifies and soothes the scalp, removes scalp redness while moisturizing and preventing further flaking.

[1] pH 6.8 - 7.8 / [2] pH 4.8 - 5.8

DERMATOLOGICALLY TESTED

6 vials **1** 9 ml / 0.30 fl oz

6 vials **2** 9 ml / 0.30 fl oz

cod. 8058456943206



solutia

shampoo dry dandruff

Purifying shampoo with Essential Oils and Piroctone Olamine. Deeply cleanses and moisturizes the scalp preventing further flaking.

pH 6.2 - 7.2

SLES FREE

DERMATOLOGICALLY TESTED

200 ml / 6.76 fl oz - 1000 ml / 33.81 fl oz

PATENTED BOTTLE

200 ml cod. 8058456943008 - 1000 ml 8058456943053

solutia

shampoo greasy dandruff

Purifying shampoo with Essential Oils and Climbazole. Deeply cleanses and soothes scalp irritation preventing excessive sebaceous secretion.

pH 6.1 - 7.1

SLES FREE

DERMATOLOGICALLY TESTED

200 ml / 6.76 fl oz - 1000 ml / 33.81 fl oz

PATENTED BOTTLE

200 ml cod. 8058456943107 - 1000 ml 8058456943152

solutia

purifying daily lotion

Synergy of Essential Oils and Climbazole. Prevents dandruff formation, keeps the scalp moisturized and reduces redness. Relieves itching.

pH 4.8 - 5.8

DERMATOLOGICALLY TESTED

50 ml / 1.69 fl oz

PATENTED BOTTLE

cod. 8058456943350

PROTOCOL OF USE *

		 <p>SOLUTIA VIAL 1 Shake well before use. Apply evenly to dry scalp massaging with small circular movements and a little pressure. Leave for 10 minutes carrying out the nubeà massage or self massage.</p>
<p>SOLUTIA PURIFYING EXTRACT Recommended in the presence of significant flaking. Shake well before use. Apply a few drops onto scalp to the most flaking areas and massage until fully absorbed. Apply Solutia Purifying Emulsion (following the instructions), or proceed directly to the specific shampoo.</p>	<p>SOLUTIA PURIFYING EMULSION Apply a moderate amount of product to the affected areas. Gently massage. Apply vial 1 of Solutia following the anti-dandruff adjuvant treatment vial instructions.</p>	 <p>SOLUTIA SHAMPOO Dry/greasy dandruff Choose the most suited shampoo according to the type of anomaly (dry or oily dandruff). After rinsing the vial 1, apply in several places to wet hair, massage and emulsify with water. Rinse. Repeat if necessary.</p>
<p>CYCLE Treatment should be integrated according to the professional and personalized diagnosis.</p>	<p>CYCLE Treatment should be integrated according to the professional and personalized diagnosis.</p>	 <p>SOLUTIA VIAL 2 Shake well before use. Use on well towel-dried scalp after the specific shampoo. Apply evenly to the scalp applying a little pressure. Do not rinse.</p> <p>CYCLE Treatment should be integrated according to the professional and personalized diagnosis.</p>

solutia

anti-dandruff adjuvant treatment

In the presence of dandruff, proceed to a cycle of Solutia treatments.

 <p>SOLUTIA PURIFYING DAILY LOTION Shake well before use. Dry hair, apply a few drops onto scalp, and massage until fully absorbed. Do not rinse.</p>	
<p>CYCLE Treatment to be used daily during the use of the Solutia vials and in the following weeks. Repeat as necessary.</p>	<p>* The standard Solutia protocol can vary according to the professional diagnoses and the state of the anomaly.</p>

équisebo

anti-sebum adjuvant treatment





équisebo

anti-sebum adjuvant treatment

Hyper secretion of sebaceous glands and sweat glands is quite widespread. A correct diagnosis can be made by analysing with a simple magnifying glass the infundibulum where the hair emerges and the first outer section of the stem. In the presence of sebum the exit point of the hair will be accompanied by a more or less gelatinous mass consisting of lipid material.

The absence of this mass and the presence of small droplets on the stem and on the scalp, is on the other hand a sign of an excessive production of sweat glands, accompanied by a slightly perceptible scent of ammonia.

A suitable normalization of the secretions will lighten heavy hair or hair that has difficulty holding a style.

It should also be remembered that excessive sebaceous secretions can lead to the formation of dandruff and so worsen the symptoms.

The Équisebo formulas, based on rare Essential Oils of *Eugenia Caryophyllus* (antiseptic, anesthetic, analgesic), *Pinus Sylvestris* (invigorating, antiseptic and anti-inflammatory) and *Salvia Officinalis* (stimulating), guarantee a normalizing of secretions whilst maintaining the protective function of the hydrolipidic coating of the scalp.



équisebo

anti-sebum adjuvant
shampoo

Normalizing shampoo with Pine, Sage
and Clove Essential Oils and plant extracts.
Deeply cleanses and prevents excessive
sebaceous production.

pH 6.0 - 7.0

SLES FREE

DERMATOLOGICALLY TESTED

200 ml / 6.76 fl oz - 1000 ml / 33.81 fl oz

PATENTED BOTTLE

200 ml cod. 8058456944005 - 1000 ml 8058456944050

équisebo

sebum-balancing
daily lotion

Synergy of Essential Oils and Trace
Elements with sebum balancing action.
Normalizes scalp functionality and re-
balances sebaceous secretion.

pH 3.6 - 4.6

DERMATOLOGICALLY TESTED

50 ml / 1.69 fl oz

PATENTED BOTTLE

cod. 8058456944159

équisebo

anti-sebum adjuvant treatment vial

Anti-sebum adjuvant shock treatment vial, specific for pre and
post-shampoo. Formulated with Essential Oils and precious
trace elements. Normalizes scalp functionality and re-balances
sebaceous secretion.

[1] pH 3.6 - 4.6 / [2] pH 4.6 - 5.6

DERMATOLOGICALLY TESTED

6 vials **1** 9 ml / 0.30 fl oz

6 vials **2** 9 ml / 0.30 fl oz

cod. 8058456944104

PROTOCOL OF USE*



ÉQUISEBO VIAL 1

Shake well before use.
Apply evenly to dry scalp massaging with small circular movements and a little pressure. Leave for 10 minutes carrying out the nubeà massage or self massage.



ÉQUISEBO SHAMPOO

After rinsing the vial 1, apply in several places to wet hair, massage and emulsify with water. Rinse. Repeat if necessary.



ÉQUISEBO VIAL 2

Shake well before use.
Use on well towel-dried scalp after the specific shampoo. Apply evenly to scalp applying a little pressure. Do not rinse.



CYCLE

Treatment should be integrated according to the professional and personalized diagnosis .

CYCLE

Treatment to be applied daily in the treatment period of the équisebo vials and in the following weeks. Repeat when necessary.



ÉQUISEBO SEBUM-BALANCING DAILY LOTION

Shake well before use.
Dry hair, apply 5 drops onto the scalp, and massage until fully absorbed. Do not rinse.

équisebo

anti-sebum adjuvant treatment

In the presence of excessive sebaceous secretions, proceed to a cycle of Équisebo treatments.



* The standard Équisebo protocol can vary according to the professional diagnoses and the state of the anomaly.

auxilia

sensitive scalp treatment



SENSITIVE SCALP
TREATMENT



auxilia

sensitive scalp treatment

Irritation, reddening, itching are all signs of sensitive skin. This is characterised by greater irritation in the moment in which the skin comes into contact with a specific substance or product.

People who have sensitive skin need products that are particularly delicate and able to soothe, cleanse and restore balance whilst moving towards regaining wellbeing.

The Auxilia formula with its synergies of Essential Oils, amongst which are *Lavendula Angustifolia* (internal and external bactericide) and *Mentha Arvensis* (antiseptic, refreshing), mixed with the smoothing and protective properties of Aloe Vera together guarantee that the skin relaxes and contribute to a perceptible sensation of wellbeing and the restoration of the scalp's healthy functioning.



auxilia

soothing emulsion

Soothing emulsion with Lavender and Cypress Essential Oils. Relieves and reduces scalp irritation and redness, helping reestablish its balance.

pH 3.0 - 4.0

DERMATOLOGICALLY TESTED

150 ml / 5.07 fl oz

cod. 8058456945200

auxilia

sensitive scalp shampoo

Soothing shampoo with Lavender, Mint and Lemon Essential Oils. Gently cleanses and reduces scalp redness thanks to Aloe Vera extract.

pH 5.9 - 6.9

SLES FREE

DERMATOLOGICALLY TESTED

200 ml / 6.76 fl oz - 1000 ml / 33.81 fl oz

PATENTED BOTTLE

200 ml cod. 8058456945002 - 1000 ml 8058456945057

auxilia

sensitive scalp treatment vial

Post shampoo vial with Essential Oils and Trace Elements. Reduces scalp irritation, restores its functionality and creates the ideal conditions for healthy hair growth.

pH 4.0 - 5.0

DERMATOLOGICALLY TESTED

10 vials 9 ml / 0.30 fl oz

cod. 8058456945101

auxilia

sensitive scalp daily lotion

Synergy of Essential Oils with soothing and rehydrating action. Helps normalize and restore scalp functionality.

pH 4.2 - 5.2

DERMATOLOGICALLY TESTED

50 ml / 1.69 fl oz

PATENTED BOTTLE

cod. 8058456945156

PROTOCOL OF USE*



AUXILIA SOOTHING EMULSION

With dry hair, apply onto scalp and leave for 10 minutes. Rinse abundantly. The application sequence of Auxilia soothing emulsion and shampoo can be inverted.



AUXILIA SHAMPOO

Apply in several places to wet hair massaging to a lather adding more water if necessary. Rinse. Repeat if necessary.



AUXILIA SENSITIVE SCALP DAILY LOTION

Shake well before use. Dry hair, apply a few drops onto scalp, and massage until fully absorbed. Do not rinse.



AUXILIA VIAL

Shake well before use. Use on well towel-dried scalp after the specific shampoo. Apply evenly to scalp applying a little pressure. Do not rinse.

CYCLE

Treatment should be integrated according to the professional and personalized diagnosis .

CYCLE

Treatment to be applied daily in the treatment period of the Auxilia vials and in the following weeks. Repeat when necessary.

auxilia

sensitive scalp treatment

In the presence of anomalous skin irritations, proceed to a cycle of Auxilia treatments.



* The standard Auxilia protocol can vary according to the professional diagnoses and the state of the anomaly.

synérgo

synergic differential treatment



nubea
essential oil therapy

synérgo

synergic differential
treatment
trattamento
differenziale sinergico

shampoo

SYNERGIC
TREATMENT



synérigo

synergic differential treatment

Keeping skin and hair in good condition is essential to prevent the occurrence of irritating and unsightly phenomena. What's more, maintaining the state of good health attained after every specific treatment is essential in order to avoid the problem returning. Often the good results obtained after a treatment can be undone by using generic products or products that are too aggressive or not suited to the skin.

The Synérigo line was created to be used safely after cycles of treatment to help maintain the benefits obtained. A careful selection of delicate tensioactives and precious Essential Oils of Eucalyptus Globulus (disinfectant, anti-inflammatory and vasoconstrictor), Lavandula Angustifolia (internal and external bactericide) mixed with Algae Extracts can help maintain the results achieved with simple daily cleaning. Products in the Synérigo line are also suitable for frequent use.



synérigo

synergic differential shampoo

Synergic differential shampoo with Lime, Lavender and Eucalyptus Essential Oils and plant extracts. Recommended for frequent use or as an alternative to specific shampoos.

pH 6.0 - 7.0

SLES FREE

DERMATOLOGICALLY TESTED

200 ml / 6.76 fl oz - 1000 ml / 33.81 fl oz

PATENTED BOTTLE

200 ml cod. 8058456946009 - 1000 ml 8058456946054

synérigo

daily shampoo

Extra-gentle shampoo with Eucalyptus, Lavender, Bergamot Essential Oils and plant extracts. Ideal in all those cases where frequent washing is required, even several times a day, or for those who practice sports.

pH 4.50 - 5.50

SLES FREE

DERMATOLOGICALLY TESTED

200 ml / 6.76 fl oz

PATENTED BOTTLE

cod. 8058456946160

synérigo

mask

Balancing hair mask. The precious synergy of Essential Oils and natural substances restores balance to the scalp while it gently conditions the hair lengths.

pH 2.6 - 3.6

DERMATOLOGICALLY TESTED

200 ml / 6.76 fl oz - 1000 ml / 33.81 fl oz

PATENTED BOTTLE

200 ml cod. 8058456946108 - 1000 ml 8058456946153

PROTOCOL OF USE*



SYNÉRGO SHAMPOO OR SYNÉRGO DAILY SHAMPOO

Apply in several places to wet hair massaging to a lather adding more water if necessary. Rinse. Repeat if necessary.



SYNÉRGO MASK

After shampooing carefully towel-dry hair and apply from the roots to the ends of the hair. Massage and leave for a few minutes then comb and rinse.

CYCLE

Frequent use recommended on the days where the Nubeà treatment is not used to maintain the results obtained.

synérgo

synergic differential treatment

Synergic differential treatment is recommended for the maintenance of the benefits obtained from Nubeà treatment cycles.

Synérgo Shampoo and Mask are ideal for frequent use in the absence of features that may require specific treatment.



sustenia

maintaining treatment



MAINTAINING
TREATMENT



sustenia

maintaining treatment

The Sustenia line has been formulated to be used after possible specific treatment cycles and by everybody who, without particular anomalies, desires to concentrate their attention on beauty and cosmeticity of their hair remaining true to nubeà's philosophy. An accurate selection of delicate tensioactives and precious Essential Oils, mixed with fine Vegetal Extracts, can help to maintain the results achieved and to enrich everyone's cleansing and beauty routine.

Sustenia line adds a newly precious resource to the strength of the other nubeà lines specifically dedicated to the treatment of the most common anomalies of the scalp. Sustenia responds to the need for aesthetic conservation and valorization of the hair still remaining loyal to the brand's philosophy. All Sustenia products are extremely delicate and respectful towards the natural balance of scalp and hair. They contribute to making nubeà experience a special, unique moment, that matches aesthetic and psycho-physical wellness.



sustenia

damaged hair shampoo

Nourishing and restoring shampoo for damaged hair with Essential Oils. Gently cleanses and restores the hair fiber providing nourishment and protection.

pH 4.8 - 5.8

SLES FREE

DERMATOLOGICALLY TESTED

200 ml / 6.76 fl oz - 1000 ml / 33.81 fl oz

PATENTED BOTTLE

200 ml cod. 8058456948089 - 1000 ml cod. 8058456948010

sustenia

damaged hair mask

Nourishing and restoring mask for damaged hair with Essential Oils. Restores and hydrates damaged hair, giving new vigor and vitality.

pH 4.2 - 5.2

DERMATOLOGICALLY TESTED

200 ml / 6.76 fl oz - 1000 ml / 33.81 fl oz

PATENTED BOTTLE

200 ml cod. 8058456948096 - 1000 ml cod. 8058456948027

sustenia

smoothing shampoo

The precious synergy of Essential Oils and plant extracts gently cleanses, disciplines and moisturizes frizzy and unruly hair, giving softness, shine and manageability.

pH 4.6 - 5.6

SLES FREE

DERMATOLOGICALLY TESTED

200 ml / 6.76 fl oz - 1000 ml / 33.81 fl oz

PATENTED BOTTLE

200 ml cod. 8058456948102 - 1000 ml cod. 8058456948058

smoothing mask

The precious synergy of Essential Oils and plant extracts disciplines and moisturizes frizzy and unruly hair, giving softness, shine and manageability.

pH 4.6 - 5.6

DERMATOLOGICALLY TESTED

200 ml / 6.76 fl oz - 1000 ml / 33.81 fl oz

PATENTED BOTTLE

200 ml cod. 8058456948119 - 1000 ml cod. 8058456948065



sustenia

colored and/or chemically treated hair shampoo

Post color shampoo specifically formulated for colored and/or chemically treated hair. Protects hair from color fading while gently cleansing and providing elasticity, softness and combability.

pH 5.1 - 6.1

SLES FREE

DERMATOLOGICALLY TESTED

200 ml / 6.76 fl oz - 1000 ml / 33.81 fl oz

PATENTED BOTTLE

200 ml cod. 8058456948126 - 1000 ml cod. 8058456948034

sustenia

colored and/or chemically treated hair mask

Post color mask infused with Essential Oils specifically formulated for colored and/or chemically treated hair. Instantly repairs and protects colored and/or chemically treated hair. Protects color and provides elasticity, softness and shine.

pH 3.3 - 4.3

DERMATOLOGICALLY TESTED

200 ml / 6.76 fl oz - 1000 ml / 33.81 fl oz

PATENTED BOTTLE

200 ml cod. 8058456948133 - 1000 ml cod. 8058456948041

sustenia

volumizing shampoo

Bodifying and volumizing shampoo with Essential Oils and Vegetal Extracts. Gently cleanses, restructures and revitalizes the hair giving softness, body and lightness.

pH 4.6 - 5.6

SLES FREE

DERMATOLOGICALLY TESTED

200 ml / 6.76 fl oz - 1000 ml / 33.81 fl oz

PATENTED BOTTLE

200 ml cod. 8058456948201 - 1000 ml cod. 8058456948164

volumizing mask

Bodifying and volumizing mask with Essential Oils and Vegetal Extracts. Detangles, restructures and gives shine to the hair lending softness, body and lightness.

pH 3.2 - 4.2

DERMATOLOGICALLY TESTED

200 ml / 6.76 fl oz - 1000 ml / 33.81 fl oz

PATENTED BOTTLE

200 ml cod. 8058456948171 - 1000 ml cod. 8058456948188



sustenia

volumizing serum

Bodifying and volumizing serum with Essential Oils and Vegetal Extracts. Detangles and gives volume to the hairstyle lending body and texture.

pH 5.2 - 6.2

DERMATOLOGICALLY TESTED

150 ml / 5.07 fl oz

cod. 8058456948195



sustenia

revitalizing hair water mousse

No rinse water mousse with Essential Oils and vitamins. Revitalizes and makes hair shiny and manageable.

pH 3.0 - 4.0

DERMATOLOGICALLY TESTED

200 ml / 6.76 fl oz

cod. 8058456948232

PROTOCOL OF USE*



ALL SUSTENIA SHAMPOOS

Apply in several places to wet hair massaging to a lather adding more water if necessary. Rinse. Repeat if necessary.



ALL SUSTENIA MASKS

After shampooing carefully towel-dry hair and apply from the roots to the ends of the hair. Massage and leave for a few minutes then comb and rinse.



SUSTENIA SERUM

After shampooing, towel dry carefully. Apply a few drops on the palm of the hand and evenly distribute the product onto lengths and ends. Proceed with the drying.



SUSTENIA WATER MOUSSE

Evenly distribute onto washed and towel-dried hair. On fine/medium hair, apply after the shampoo. On thick and/or treated hair, apply after the mask. Do not rinse. Proceed with the drying.

sustenia

maintaining treatment

SUSTENIA DAMAGED hair contains precious Bergamot (venous tonic and depurative) and Eucalyptus (disinfectant, anti-inflammatory and vasoconstrictor) Essential Oils that working in synergy with a selection of Camellia and Argan Vegetal Extracts, nourish, regenerate and hydrate the hair fibre giving shine and silkiness. Its use is ideal in the case of damaged, dull and fragile hair and after the use of nubeà specific treatments in order not to compromise the results obtained. Its components provide nutrition and protection giving new vitality and vigour to the hair with a precious anti-age effect.

Thanks to the combination of delicate surfactants, Lavender (internal and external bactericide) and Rosemary (dermopurifying and stimulating) Essential Oils and Bamboo Vegetable Extracts, **SUSTENIA SMOOTHING** responds to the need for hydration and control in the case of frizzy, dry and untameable hair. Its precious formula cleans, hydrates and disciplines hair providing softness, luminosity and combability while fully respecting the hair and scalp's natural balance. It doesn't compromise results obtained with the use of possible specific treatments and it acts with extreme delicacy.

SUSTENIA CHEMICALLY TREATED AND/OR COLORED hair formula is enriched with Argan Extracts, it regenerates and protects hair from color fading while cleansing, nourishing and hydrating. It makes the color more intense and long-lasting providing at the same time elasticity, softness and combability. It acts in harmony with the hair and scalp's natural balance, and it delicately respects the results obtained with specific treatments.

SUSTENIA VOLUMIZING contains precious Fennel Essential Oils (soothing, anti-inflammatory and relaxing), rice amino acids, dates fermented extracts and pea proteins, which work in synergy carrying out an efficient anti-aging, antioxidant, bodifying and hydrating action. It cleanses, nourishes and smoothes the hair giving softness, body and texture. Its use is ideal in the case of thin hair, lacking vitality and volume, and after the use of specific nubeà treatments in order to not compromise the results obtained. Its ingredients restructure and revitalize the hair giving vigour, brightness and a precious lightness effect.

SUSTENIA REVITALIZING Water Mousse contains precious Tangerine Essential Oils (relaxing, sedative and mild antiseptic) and Horse-Chestnuts Extract. The two work in synergy bringing an essential reinforcing action, ideal for reinvigorating fragile hair. Also enriched with Juniper (purifying) and Bergamot (venous tonic and depurative) Essential Oils and B, E, and A vitamins, it restructures and revitalizes the hair giving vigor and extreme shine. Thanks to its light consistency and embracing and comforting texture, it can be easily and evenly applied, making hair manageable during drying. Its no-rinse formula is ideal for all hair types.

selenium

sun care treatment





solenium

sun care treatment

Formulas are carefully studied to protect, moisturize and nourish, restoring and re-establishing vitality for the scalp and hair and eliminating all salt and chlorine residues for a soothing, refreshing effect with a pleasant fragrance.

Solenium treatments are highly recommended during the exposure to the sun that causes the accumulation of free radicals, and may also be used when practicing outdoor sports and/or swimming in the pool.



solenium
oil
protecting

Extra-light protective oil for hair with Bergamot and Mandarin Essential Oils and UV filters. Nourishes the hair by donating softness and shine, without weighing. Protects the hair from color fading.

n.a.
DERMATOLOGICALLY TESTED
150 ml / 5.07 fl oz

cod. 8058456947037

solenium
bi-fluid
protecting

Extra-light bi-phase protective spray for hair, with Bergamot and Mandarin Essential Oils and UV filters. It softly disentangles, making it shiny and soft without weighing. Protects the hair from color fading.

pH 4.5 - 5.5
DERMATOLOGICALLY TESTED
150 ml / 5.07 fl oz

cod. 8058456947044

solenium
fresh-gel
revitalizing after sun hair/body

Hair/body revitalizing shower gel with Lavender, Eucalyptus Essential Oils and trace elements. Anti-salt and anti-chlorine action. Refreshing effect.

pH 5.0 - 6.0
SLES FREE
DERMATOLOGICALLY TESTED
200 ml / 6.76 fl oz

cod. 8058456947013

solenium
shampoo
nourishing after sun

Nourishing shampoo with Orange and Lemon Essential Oils. Anti-salt and anti-chlorine action.

pH 5.0 - 6.0
SLES FREE
DERMATOLOGICALLY TESTED
200 ml / 6.76 fl oz

PATENTED BOTTLE
cod. 8058456947006



solenium

mask
nourishing after sun

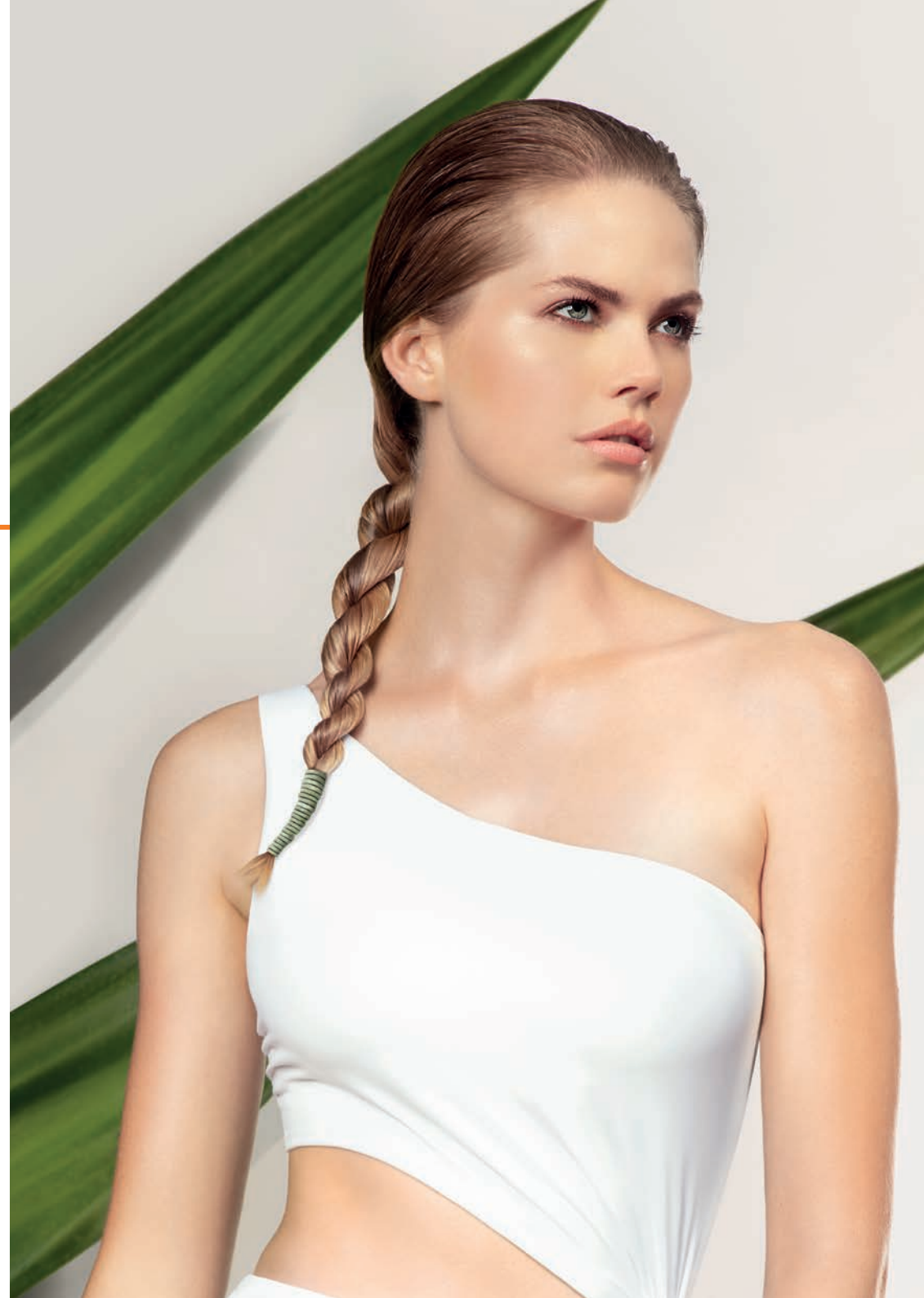
Nourishing hair mask with Orange, Lemon
Essential Oils and trace elements.
Anti-salt, anti-chlorine action and UV
filters.

pH 4.0 - 5.0

DERMATOLOGICALLY TESTED

200 ml / 6.76 fl oz

cod. 8058456947020



PROTOCOL OF USE*



SOLENIUM OIL

Spray on the hair before and after sun exposure or bathing in the sea/ swimming pool. Do not rinse.



SOLENIUM BI-FLUID

Shake well. Spray on the hair before and after sun exposure or bathing in the sea/ swimming pool. Do not rinse.



SOLENIUM FRESH-GEL

Massage on wet skin for a rich foam. Rinse. Ideal also for hair.



SOLENIUM SHAMPOO

Apply in several places to wet hair massaging to a lather adding more water if necessary. Rinse. Repeat if necessary.



SOLENIUM MASK

After shampooing carefully towel-dry hair and apply from the roots to the hair. Massage and leave for a few minutes then rinse.

solenium

sun care treatment

With Solenium products containing precious Essential Oils, plant extracts, trace elements and vitamins, you can continue enjoying healthy, protected scalp and hair even at the hottest time of year. After-sun shampoo and shower gel with a gentle action, containing no SLES, DEA or PARABENS, fat-soluble sunscreens contained in the oil and mask and a bi-phase action moisturizer with a dry feel form a unique complete line of sun products.

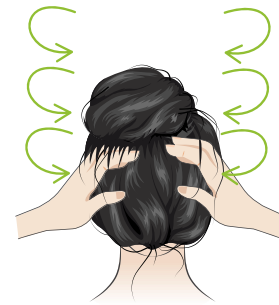




SELF MASSAGE

Scalp massage benefits.

Scalp massage must be carried out at least once a week, taking care to proceed with some gym scalp exercises too. The massage has a relaxing effect that generates wellness activating scalp and hair vital functions at the same time. Doing massage during the application of Nubeà vial 1, the synergy of the two will increase hair's growing phase (the anagen phase) for some weeks, obtaining stronger and denser hair.



1.

With both hands delicately massage the scalp with circular movements (detoxification phase) starting from the nape and moving up to the top of the head.



2.

With both hands trace zig-zag lines, starting from the nape and proceeding up to the top.



3.

End the massage lightly pressing the scalp with both open hands, starting from the forehead and sliding back to the nape.

INVESTIGATION & DIAGNOSIS SCALP AND HAIR

PERSONALIZED TREATMENT		HOME TREATMENT	
date:		date:	
TREATMENT 1	CYCLE	TREATMENT 1	CYCLE
SHAMPOO	CYCLE	SHAMPOO	CYCLE
TREATMENT 2	CYCLE	TREATMENT 2	CYCLE
DAILY USE		DAILY USE	

note:

© COPYRIGHTS

All the elements, figurative and non-figurative, that make up this document and its presentation (including but not limited to: names, logos, trademarks, product names, slogans, the images, texts, layouts, and any other material published in this brochure) are exclusively available to Nubea which owns the related rights or rather the exclusivity authorized from entitled third parties. The reproduction, use and / or counterfeiting, in any way, even indirect, is prohibited under current trademark laws and copyright.





nubea.it

PRINTED IN ITALY
R2306

